



## BaracodaManager



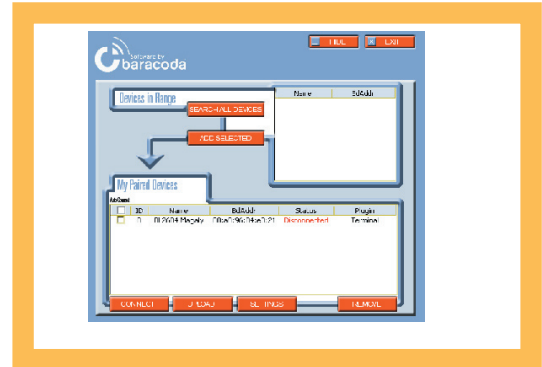
### DESCRIPTION

This software represents the real **value-added** of the offer of Baracoda. It is very easy to install and straightforward to use. Very user friendly, with only a few buttons, the BaracodaManager lets the end user, besides inserting the scanned barcode in a field that you select in your application program (Kemul plug-in) or displaying it (Terminal plugin), the following features:

- Very easy connection (one click connectivity)
- Automatic reconnection
- Bufferisation of the data and automatic re-transmission
- Possibility of simply adding a prefix or a suffix
- Possibility of setting the Bluetooth barcode reader(s) parameters (sniff mode, power emission)

The BaracodaManager is compatible with the following OS and Bluetooth stack. For the list of the compatible devices, please refer to the Baracoda Compatibility paper.

**PC:** Win200/WinXP/Win2003  
Widcomm stack 1.2.x.x, 1.3.x.x, 1.4.x.x  
Microsoft stack (WinXP Service Pack 1 US version, Service Pack 2 worldwide).  
Up to 7 scanners connected (PC in Master mode)



**Pocket PC/Palm OS:** Pocket PC 2002/2003, Palm OS, WinCE 4.x, .Net

Widcomm stack 1.0.x.x, 1.3.x.x, 1.4.x.x  
Microsoft stack (especially for WinCE devices with embedded Bluetooth stack)  
1 scanner connected at maximum (PPC in master mode)

**Symbian version (smart mobile phones):** works under any mobile phone running Symbian operating system.

Maximum 1 scanner connected

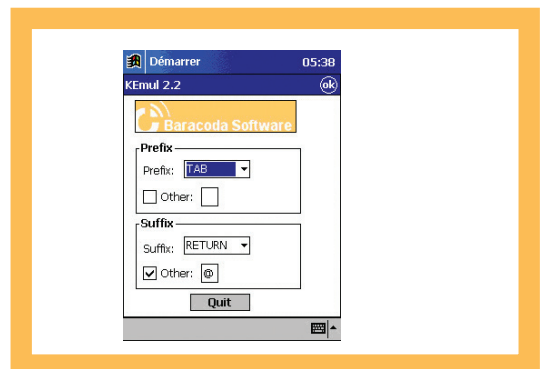
## K - Emul



### Description

K-emul lets you utilise all the Baracoda products and **insert the scanned barcode value in selected field.**

It lets you add a prefix and a suffix. Moreover its great advantage is that it works on every stack (ie every Bluetooth device with an SPP connection).



### About Baracoda

Baracoda is the world's first and only manufacturer offering a full range of Bluetooth barcode scanners. Baracoda's field-proven wireless and barcode scanning solutions provide its customers and partners with efficient tools that are innovative, reliable and convenient to use, simplifying integration for a quick Return On Investment.

# BaracodaManager SDK



## General Description

---

Thanks to our **APIs available** for most common platforms, integrate necessary features directly in a mobile application: connect / disconnect / read barcode / acknowledgement, etc...

The BaracodaManager is an application integrating the Bluetooth user interface to let the end user connect devices very rapidly with one-click connectivity. Moreover, it lets the user **configure and use Baracoda devices** in a very easy way.

The BaracodaManager uses a specific library that provides an abstraction layer allowing the **developer to integrate Baracoda products to his application very rapidly**. Moreover, the DLL will deal with all the low level routines, timeouts, connection and configuration management.

## Implemented Functionalities

---

Here is a short list of **implemented functionalities**:

- Device inquiry
- SPP service discovery
- Connection/disconnection and automatic connection
- Scanner configuration
- Barcodes upload
- Barcodes reception, acknowledgement and processing
- Plug-ins management

These libraries are at the disposal of developers that want to integrate the barcoding data collected into their application. The Baracoda Bluetooth SDK will be of **interest for all developers of mobile applications** that do not want to deal with the Bluetooth protocol complexity and just need easy tools to be able to communicate wirelessly to their application with a Bluetooth barcode scanner.

## The easiest way to integrate the Bluetooth functionality into your existing applications!

---

Bluetooth protocol is very complex. Developing the first architecture requires great expertise in this communication protocol. In addition, numerous interruptions (with a very high level of priority) are generated. It is therefore a question of the fine management of these multiple interruptions and the different real time aspects linked to them.

The Baracoda SDK gives an abstraction to the Bluetooth's protocol complexity. For example, instead of a set of several commands to create a Serial Port Profile connection (discovery, Service discovery, Pairing, Connection), the developer with Baracoda SDK will easily create the connection just with one command. This leads to:

- 1- Reduced time to market and Development efforts on the client side.
- 2- Reduced memory and processing power requirements on the client processor hardware.

## Two versions available:

---

There are two different versions of the Baracoda SDK:

Plug-in version:

The plug-in version is built **to use the BaracodaManager**. This means that with the plug-in version BaracodaManager handles all Bluetooth related tasks as well as all product settings. Data will be directly exchanged between the BaracodaManager and the plug-in. The user application simply receives scanned barcodes and saves time to develop a plug-in. Also, the plug-in can be developed with C++, C, Visual Basic and .NET

Full version:

The full version is **for stand alone applications**. In other words, the user develops its own application software Interface and consequently will be able to create a BaracodaManager-like application. This includes the management of the three layers: Configuration, Bluetooth and Barcode Parser. The programming language required is C++ and soon .NET.

Baracoda, Inc. (US Office)  
45 Main street - Suite 616 - Brooklyn, NY 11201  
Ph: 718 488 9600 - Fx: 718 488 9601

Baracoda SA (Europe Office: France)  
30 Avenue de l'Amiral Lemonnier - 78160 Marly-Le-Roi  
Ph: +33 1 30 08 89 00 - Fx: +33 1 30 08 89 98



The bluetooth name and Bluetooth registered trademarks are owned by Bluetooth SIG, Inc., and are used by Baracoda under license. The Baracoda names and Baracoda trademarks are own by Baracoda. All specification are subject to change without notice - Non contractual pictures © Baracoda - All rights reserved